

We're looking for families in Illinois who have concerns about their **toddler's speech or language** to participate in our language development study

Eligibility

Age

Child is less than 31 months old



Concern

Parent is concerned about child's language development



Diagnoses

Child has no other diagnosis that influences his/her development



Language

Primary caregiver uses only English with the child



Incentives

Money

Up to \$1,150 for your family's time over the 19-month study



Online

Activities occur over video calls during a time that is convenient for you



Development

Learn how to support your child's language growth and development



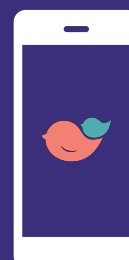
iPad

Receive an iPad (and potentially cellular service) during your participation



About

The Early Intervention Research Group (EIRG) exists to enhance the early development of infants and toddlers. Our mission is to empower families and providers to use evidence-based early intervention strategies to maximize child development.



Connect

Text 'info' to
847.750.3440

ei@northwestern.edu
847.491.3183