

We're looking for families with toddlers who have autism spectrum disorder to participate in our research study on telehealth

Eligibility

Child

Child is less than 4 years old, has a diagnosis of autism spectrum disorder, and is not yet speaking in full sentences



Caregiver

Child's biological mother is willing to participate. Child's mother learned English at a young age



Language

English is the primary language spoken at home



Internet

Ability to participate in video calls, including access to a device with a camera (phone or computer)



Incentives

Money

Up to \$225 for your family's time



Therapy

Speech-language therapy to enhance your child's social communication



Training

Parent will learn to use communication strategies during daily routines



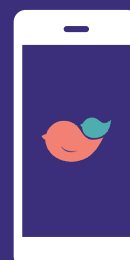
Online

Therapy and assessment sessions take place online



About

The Early Intervention Research Group (EIRG) exists to enhance the early development of infants and toddlers. Our mission is to empower families and providers to use evidence-based early intervention strategies to maximize child development.



Connect

Text 'info' to
847.750.3440

ei@northwestern.edu
847.491.3183